

TWO MERRIWEATHER

10960 GRANTCHESTER WAY, COLUMBIA, MD 21044



5-story Class A+
127,422 SF Office Building



CUSHMAN &
WAKEFIELD

Howard Hughes



Two Merriweather is a light-filled, state-of-the-art building that houses street-level retail and provides an environment for you to do your best work, including a marketing center with space for meetings and events.

Two Merriweather is the regional headquarters of Howard Hughes and Enlighten IT. Employees enjoy amenities like a boardwalk over a bioretention pond, direct connectivity to Merriweather Post Pavillion outdoor spaces and STEER autonomous parking in the adjacent garage.

FEATURES



127,422 SF LEED Silver
Certified office building with
9,000 SF of ground-level retail



Located across the plaza from
Cured, 18th & 21st and the
One Merriweather Deli



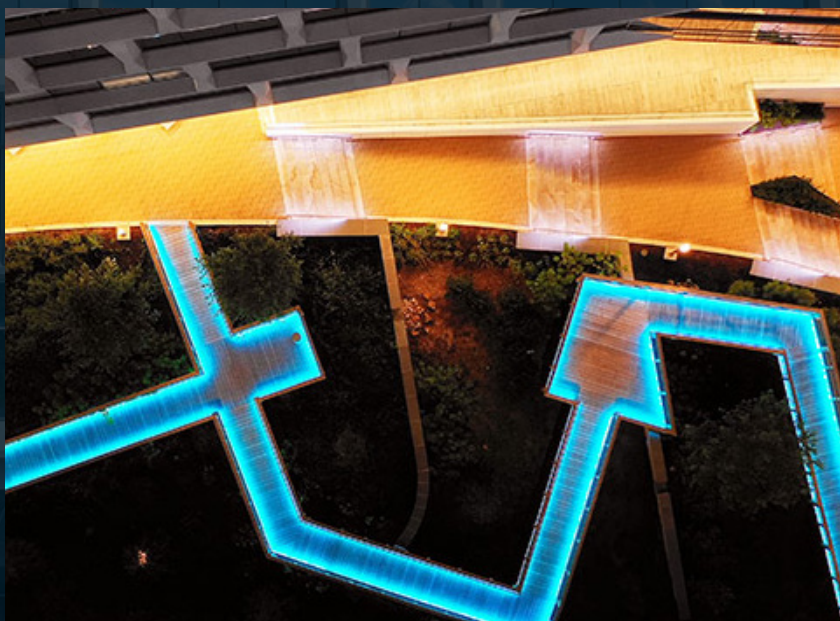
5th floor outfitted with
five spec suites of
varying sizes

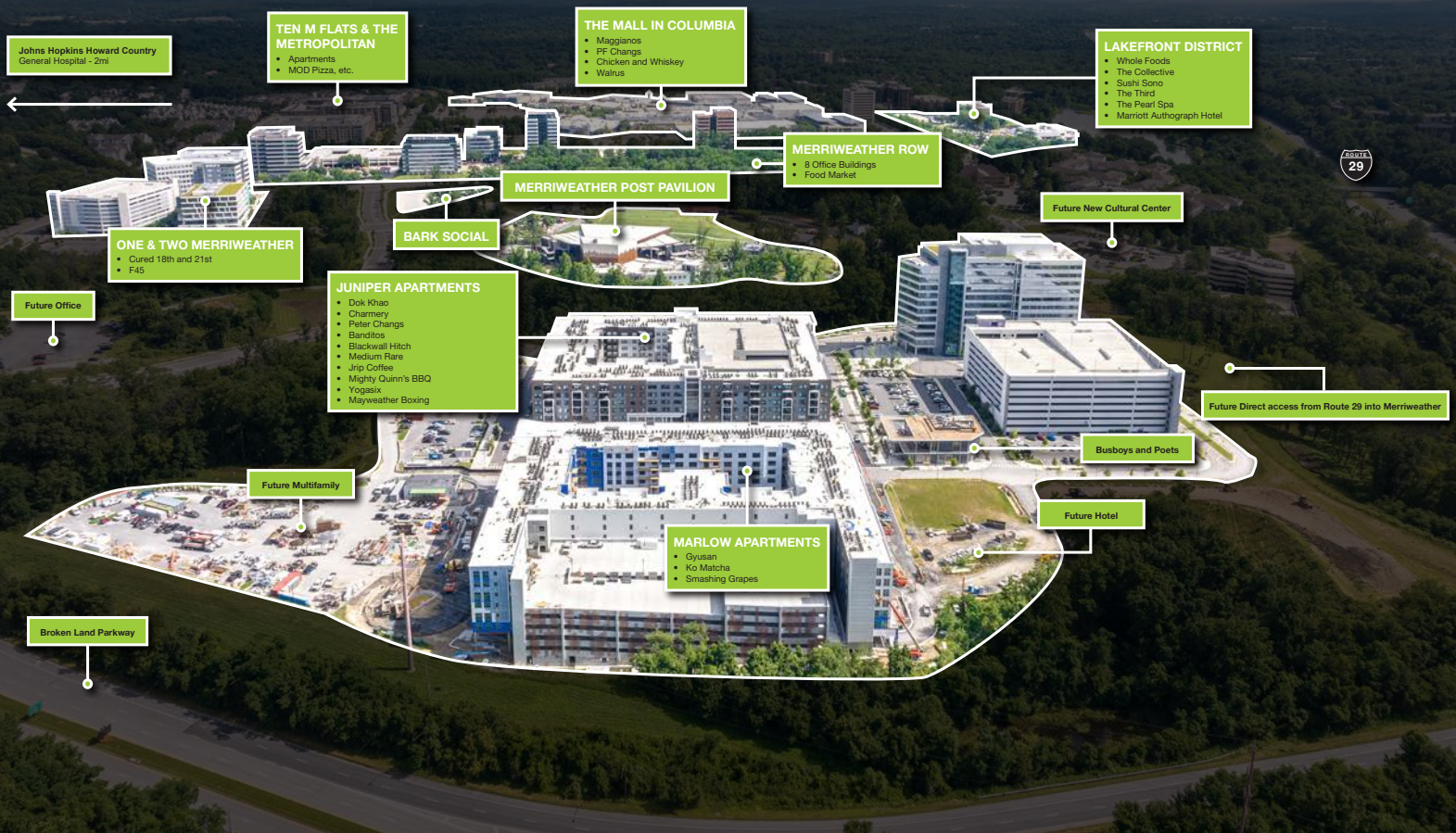


Ample parking spaces with
autonomous parking
through STEER



Lobby-level marketing
center with full audio-visual
capabilities and space for
large meetings and events





Close proximity to
Baltimore, Annapolis,
Montgomery County and
Washington, D.C.



Easy access to I-95,
Route 29, I-70, Route 100
and Route 32

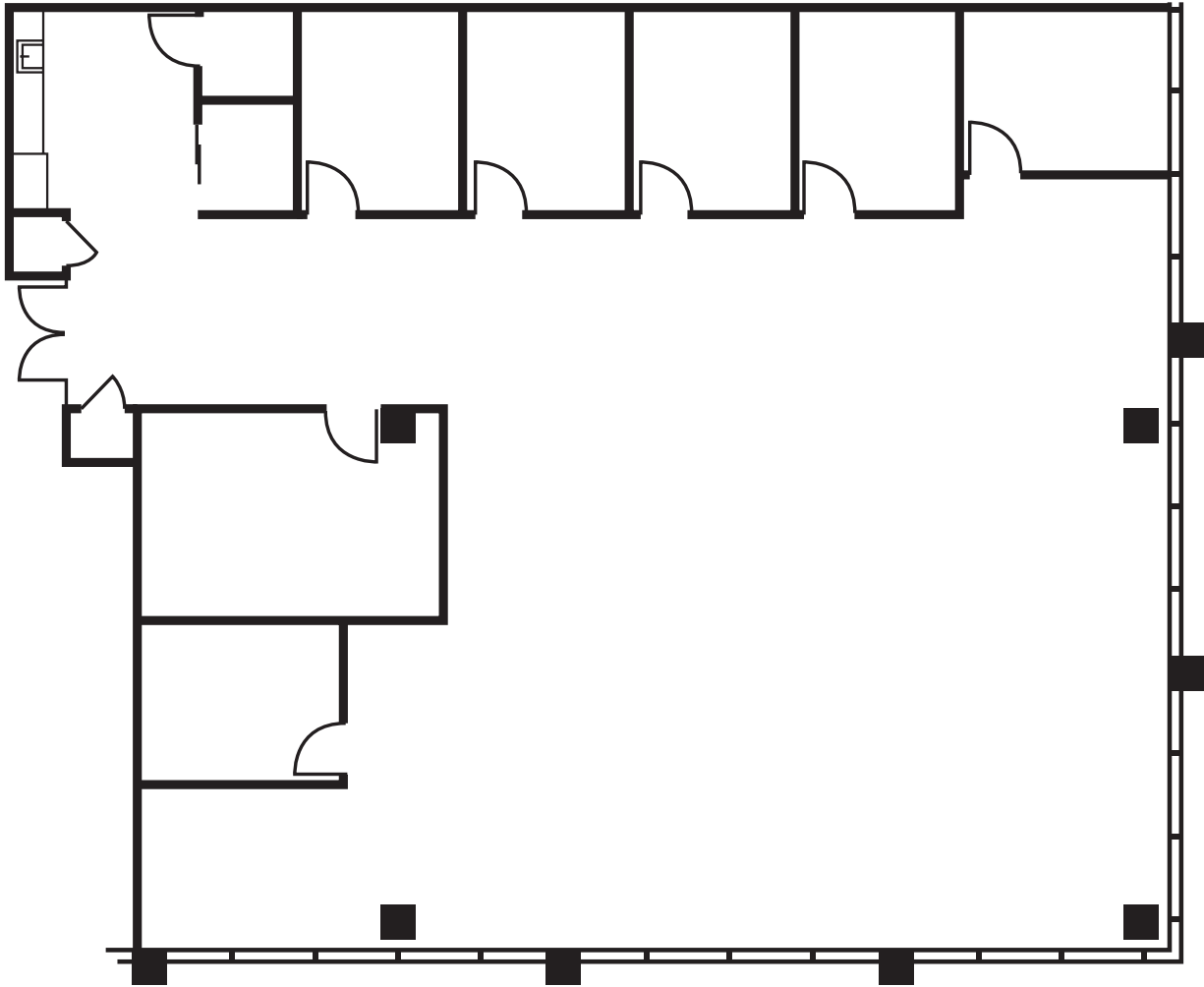


20-minute drive to BWI
Amtrak Station with
high-speed connections
to D.C., Philadelphia and
New York City



Within 9-mile radius of
NSA and Fort Meade

FLOOR PLAN



SUITE 530 | 5TH FLOOR | 4,613 RSF



Rich Thomas, CCIM

410.591.3881

richard.thomas@cushwake.com

Matt Melnick

410.685.9880

matthew.melnick@cushwake.com

Patrick Crilley

301.787.7730

pat.crilley@cushwake.com

merriweatherdistrict.com/work-here



**CUSHMAN &
WAKEFIELD**

Howard Hughes