

10420

> 10420 Little Patuxent Parkway
Columbia, MD 21044



Howard Hughes

10420

10420 offers the opportunity to establish a dedicated presence in a premier, standalone office setting. With access to modern amenities, nearby dining, wellness options and outdoor spaces, it's a place where your team can thrive, and your brand can stand out, all in the heart of Merriweather District.

FEATURES

TOTAL BUILDING SIZE: 110,863 SF

NUMBER OF FLOORS: 5

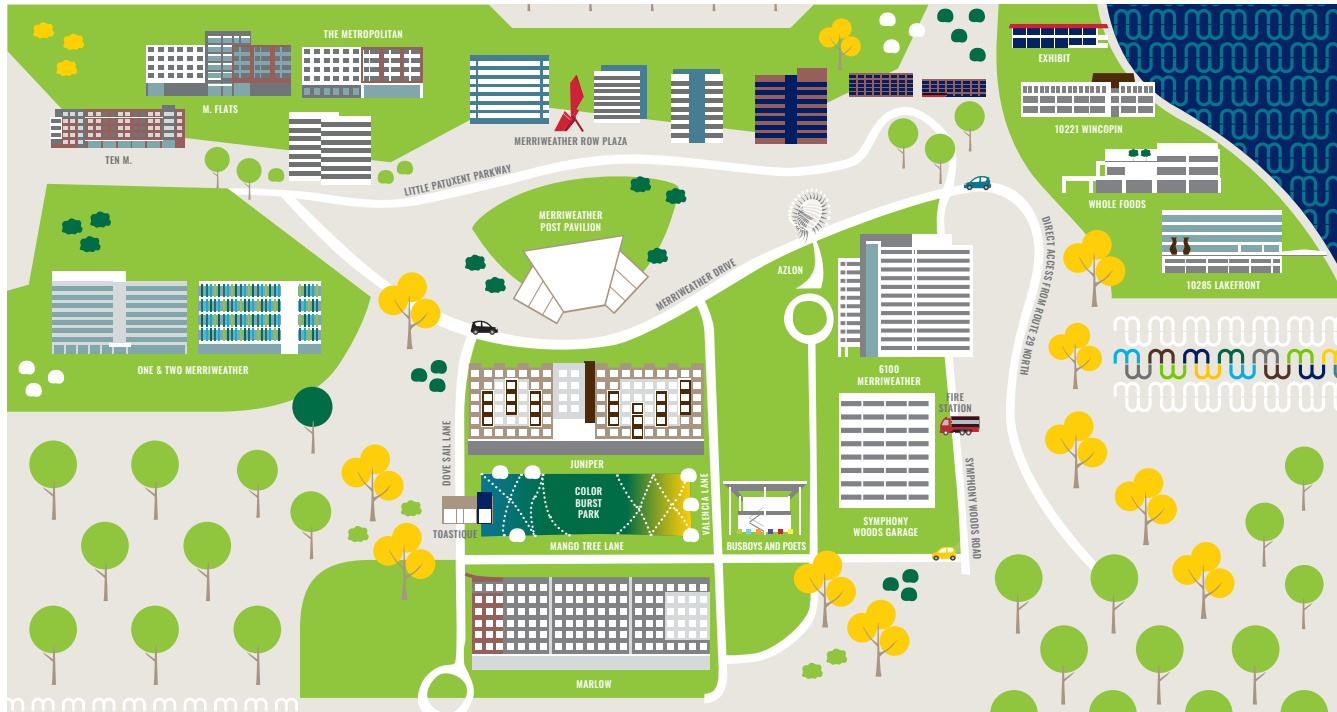
AVERAGE FLOOR PLATE: 22,172 SF

YEAR BUILT/RENOVATED: 1981/2022

PARKING RATIO: 4 Spaces per 1,000 SF,
Free Surface & Garage Covered

AMENITIES: Fully Amenitized Fitness Center,
Tenant Lounge, Bike Storage, Modern Lobby

INTERNET PROVIDERS: Verizon, AT&T, Comcast



RICH THOMAS, CCIM
410.591.3881
RICHARD.THOMAS@CUSHWAKE.COM

MATT MELNICK
410.913.1784
MATTHEW.MELNICK@CUSHWAKE.COM

PAT CRILLEY
301.787.7730
PAT.CRILLEY@CUSHWAKE.COM